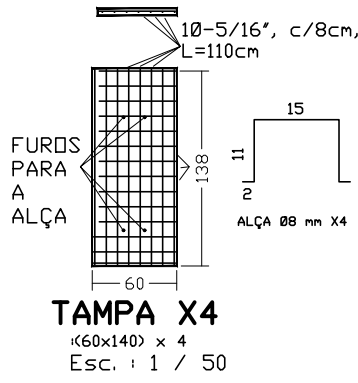
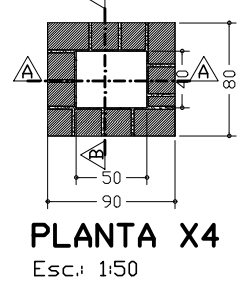


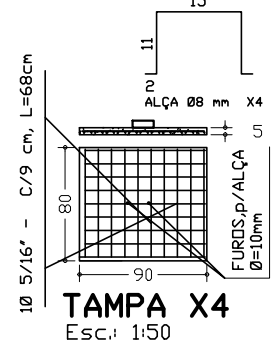
LaJe-concreto armado, fck=21MPa, traço: 1/2 1/4, e=8cm; feragem: 10 5/16" - 3.41 c/19cm  
 mais 18 5/16" - 1.91 c/19cm  
**PLANTA BAIXA-TANQUE SÉPTICO** Esc.: 1:150  
 LaJe-concreto armado, fck=21MPa, traço: 1/2 1/4, e=8cm  
**CORTE DD** Esc.: 1:50



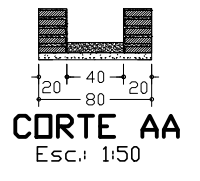
**TAMPA X4**  
 (60x140) x 4  
 Esc.: 1 / 50



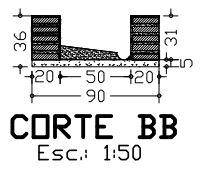
**PLANTA X4**  
 Esc.: 1:50



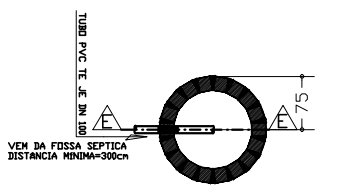
**TAMPA X4**  
 Esc.: 1:50



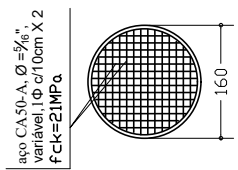
**CORTE AA**  
 Esc.: 1:50



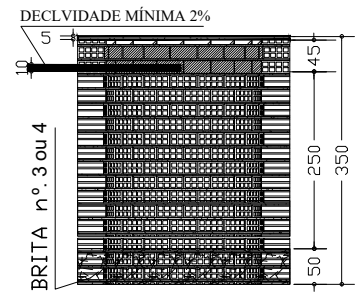
**CORTE BB**  
 Esc.: 1:50



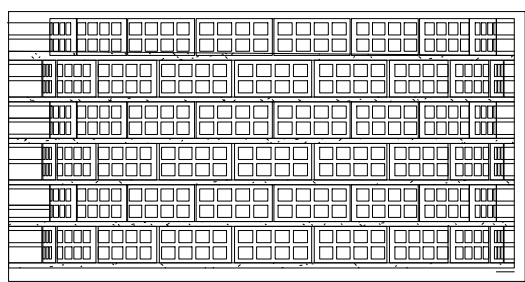
**PLANTA BAIXA SUMIDOURO**  
 Esc.: 1 / 100



**TAMPA, SUMIDOURO**  
 Esc.: 1 / 100



**CORTE EE SUMIDOURO**  
 Esc.: 1:100



**DETALHE: ALVENARIA SUMIDOURO** Esc.: 1:50

Projeto de <b>H I D R O S A N I T Á R I O</b>			
ASSINATURAS			
_____ PREFEITURA MUNICIPAL DE CORAÇÃO DE JESUS		AUTOR DO PROJETO Engo. Civil : _____ HEIDEMARCIO COSTA FONSECA - CREA-MG 194.694/D	
ÁREAS (m²)			
TERRENO	CONSTRUÍDA	LIVRE	TOTAL
VARIÁVEL	36.195	VARIÁVEL	36.195
ASSUNTOS: <b>planta baixa/cortes, cx passagem, tanque séptico e sumidouro</b>			
ESCALAS : INDICADAS	(cotas em cm)	PRANCHA: 7/9	DBRA: RESIDENCIAL INF-FAMILIAR
DATA: julho/2020			

**APROVAÇÃO:**

PRODUCED BY AN AUTODESK STUDENT VERSION

PRODUCED BY AN AUTODESK STUDENT VERSION