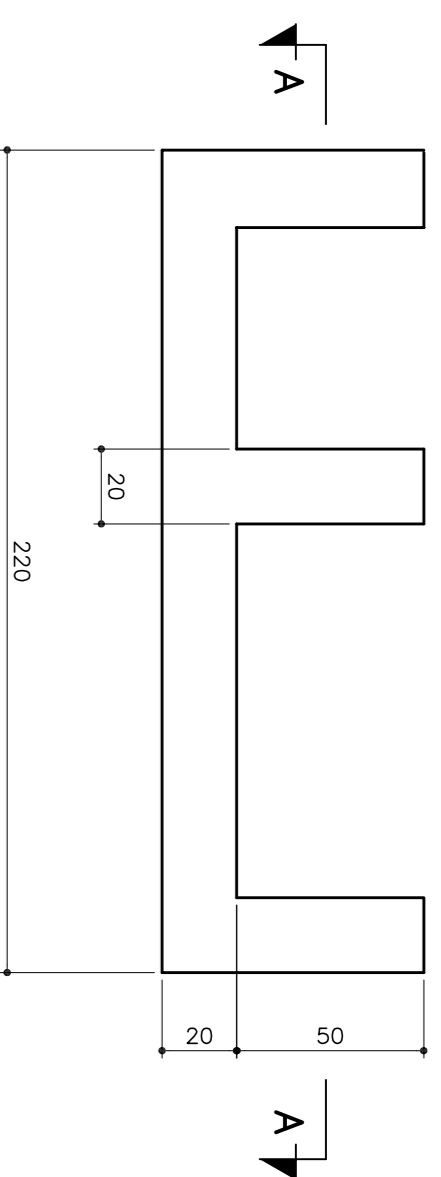


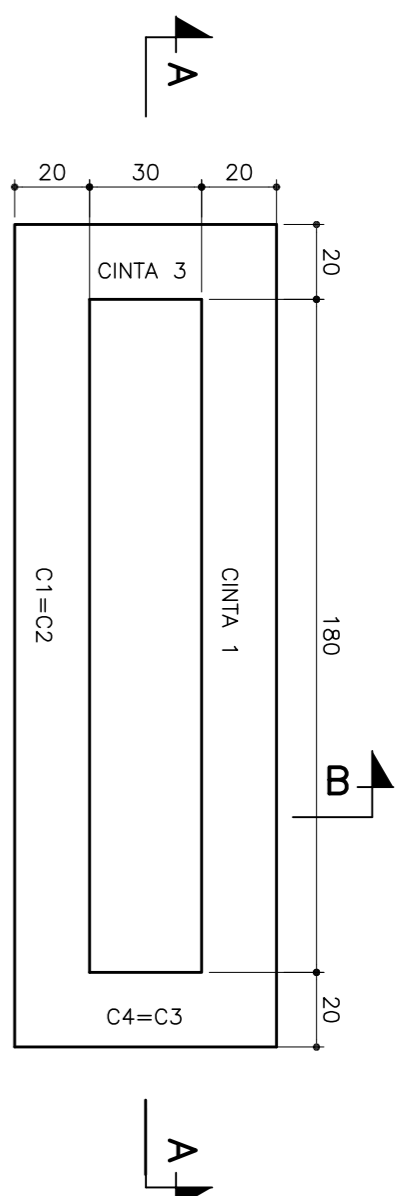
ABRIGO DOS QUADROS ELÉTRICOS

FORMA – CINTA 1, CINTA 2, CINTA3, CINTA 4

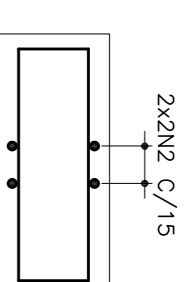


PLANTA  
ESC.: 1:20

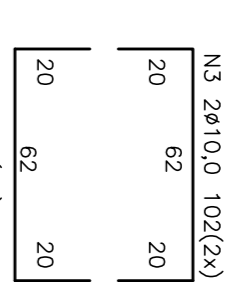
ARMAÇÃO – CINTA 3, CINTA 4



PLANTA  
ESC.: 1:20

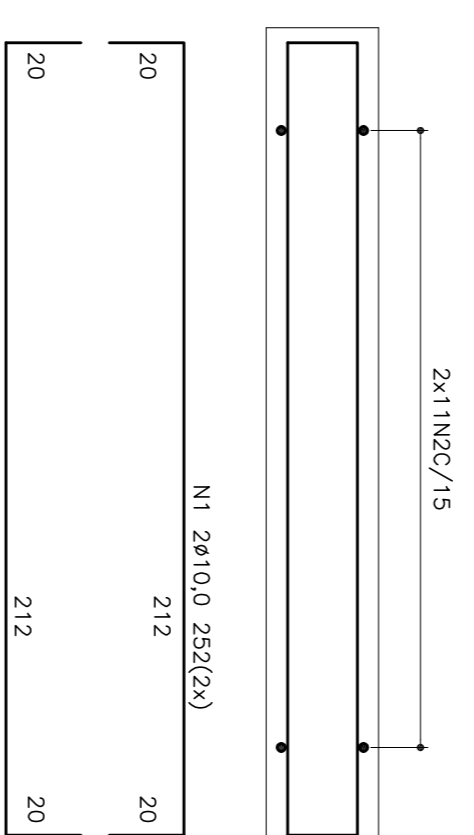


N2 52x50,0 C/15 30

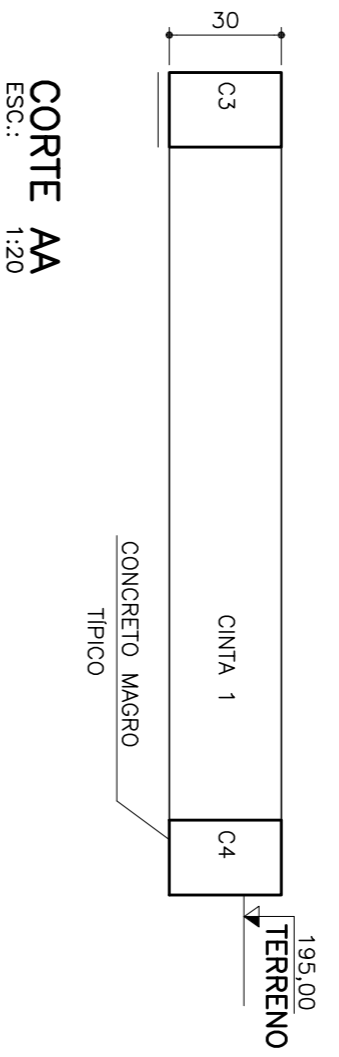


PLANTA  
ESC.: 1:20

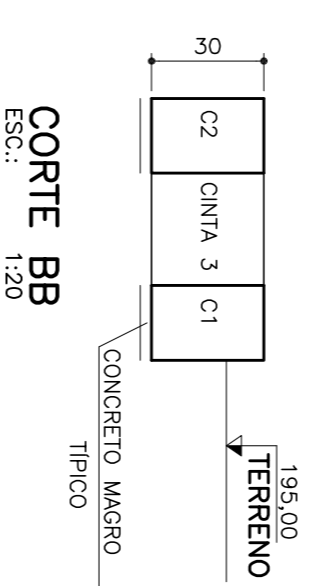
PLANTA ARMAÇÃO – CINTA 1, CINTA 2



PLANTA  
ESC.: 1:20



CORTE AA  
ESC.: 1:20



CORTE BB  
ESC.: 1:20

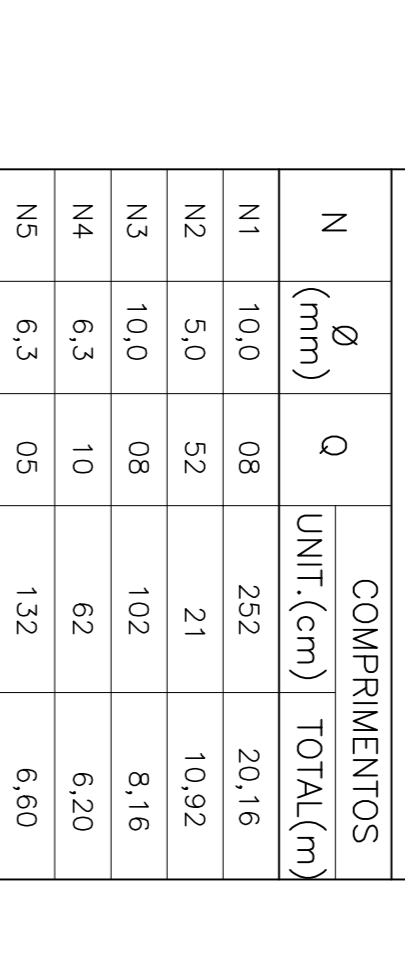
N	Ø (mm)	Q	COMPRIMENTOS	
			UNIT (cm)	TOTAL(m)
N1	10,0	08	252	20,16
N2	5,0	52	21	10,92
N3	10,0	08	102	8,16
N4	6,3	10	62	6,20
N5	6,3	05	132	6,60
N6	6,3	16	82	13,12
N7	6,3	06	232	13,92
N8	6,3	15	62	9,30
N9	6,3	05	212	10,60
TOTAL	5,0	52	21	10,92
	6,3	57	782	59,74
	10,0	16	354	28,32
PESOS				
TOTAL	5,0	CA 60	10,92m	1,69kg
	6,3	CA 50	59,74m	14,64kg
	10,0	CA 50	28,32m	17,48kg

NOTAS:

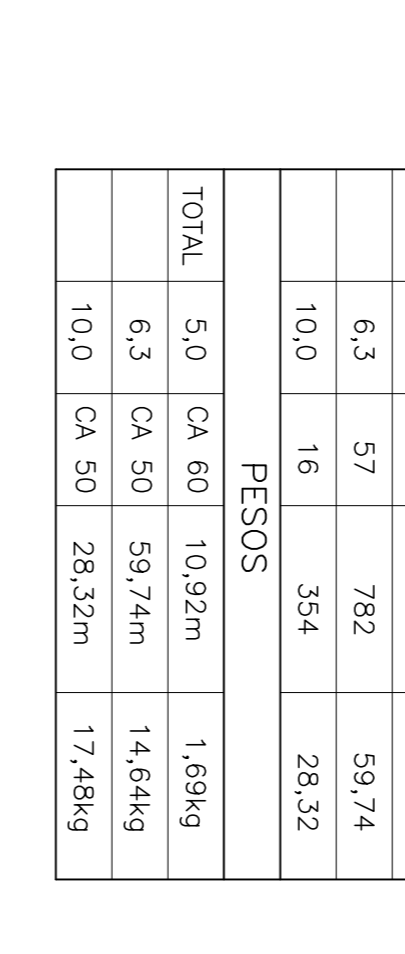
1-CORTAS EM GENTILÍTIOS, ELEVÇÕES EM METRO SALVO INDICAÇÃO CONTRÁRIA.



PLANTA LAJE 140x70x8

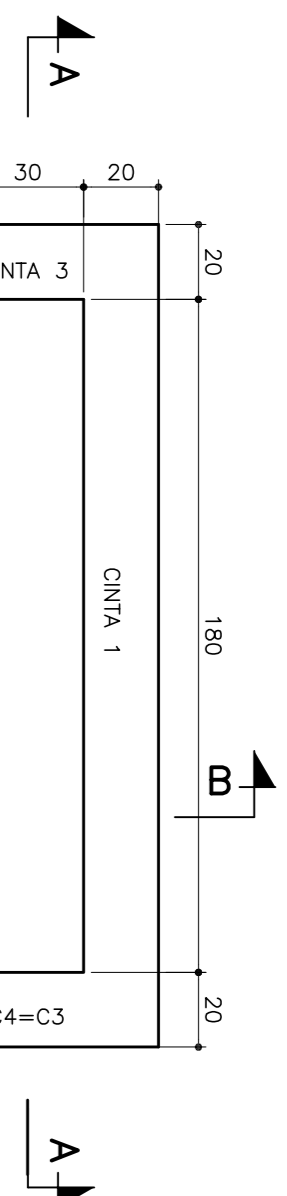


FORMA  
ESC.: 1:20



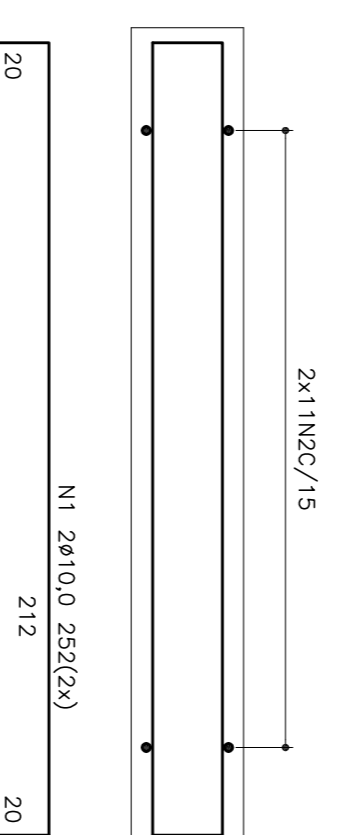
ARMAÇÃO  
ESC.: 1:20

PLANTA LAJE DE COBERTURA 240x90x8cm



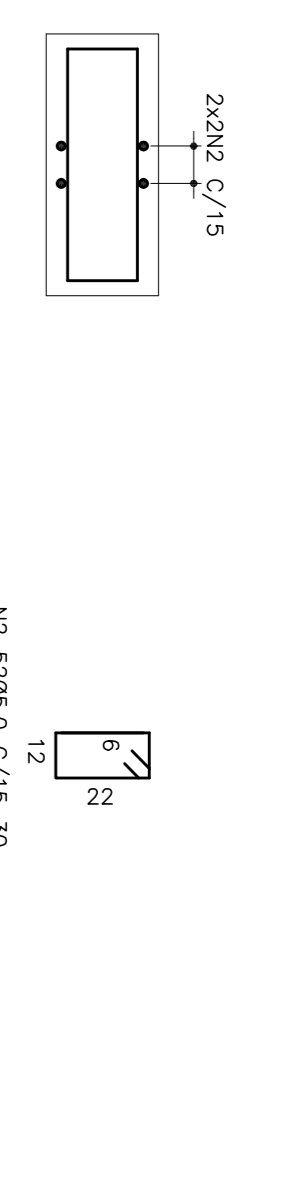
FORMA  
ESC.: 1:20

ARMAÇÃO



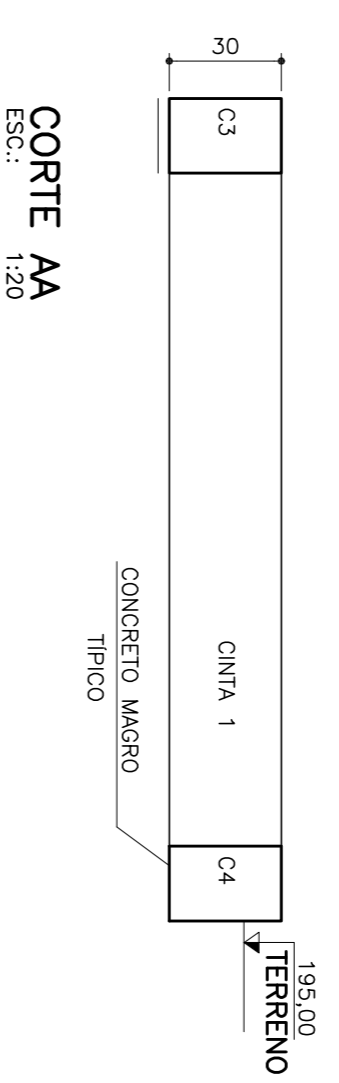
ARMAÇÃO  
ESC.: 1:20

PLANTA LAJE 220x70x8cm



FORMA  
ESC.: 1:20

ARMAÇÃO



ARMAÇÃO  
ESC.: 1:20

PROGRAMA: Programa de Aceleração do Crescimento - PAC 2

MUNICÍPIO: SÃO JOAQUIM

TÍTULO: SISTEMA DE ABASTECIMENTO DE ÁGUA PROJEITO ESTRUTURAL ABRIGO OCM - FORMA E ARMAÇÃO

DATA: OUTUBRO/2013

ARQUIVO: DE-2012.007-MG-COUSA-EST.003=0

CONTRATANTE: FUNASA - Fundação Nacional de Saúde

CONTRATADA: DESPRO

RESPOSTA TÉCNICA: ALBERTO OLIVEIRA CHAVES

REG. Nº: 69.785/0