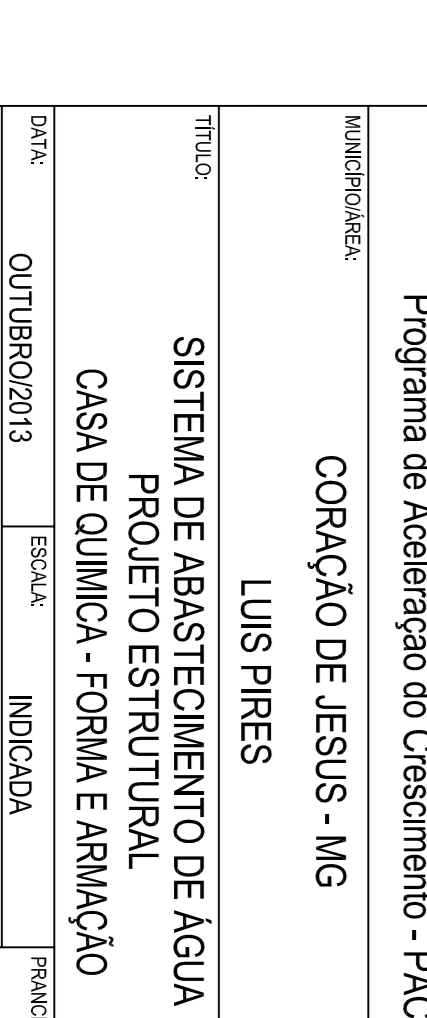
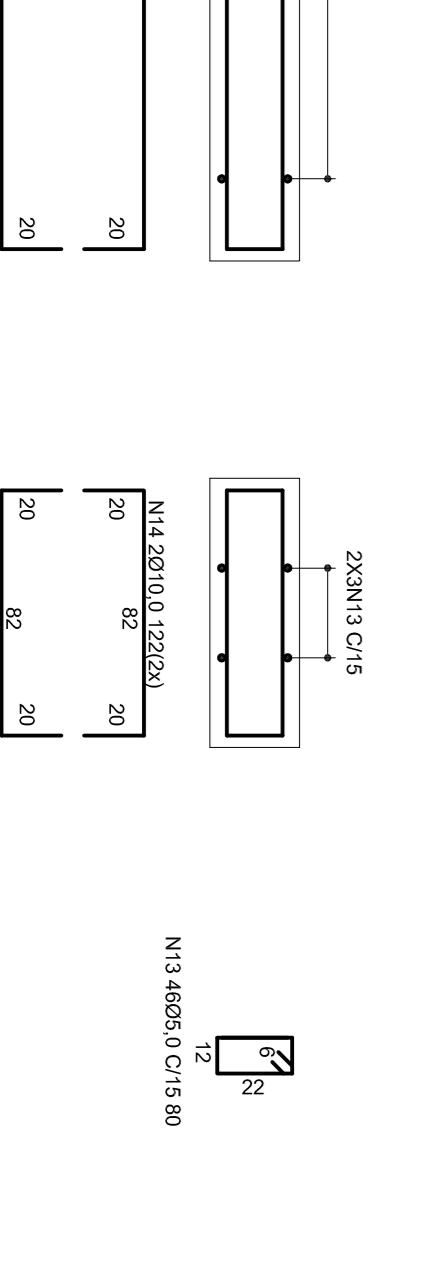
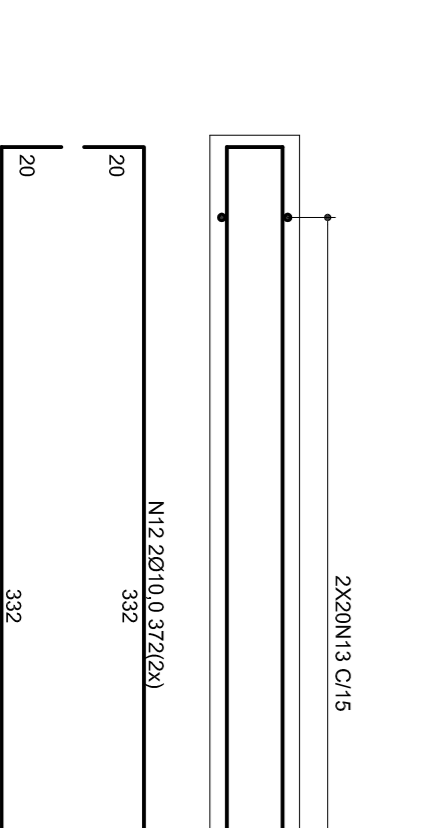
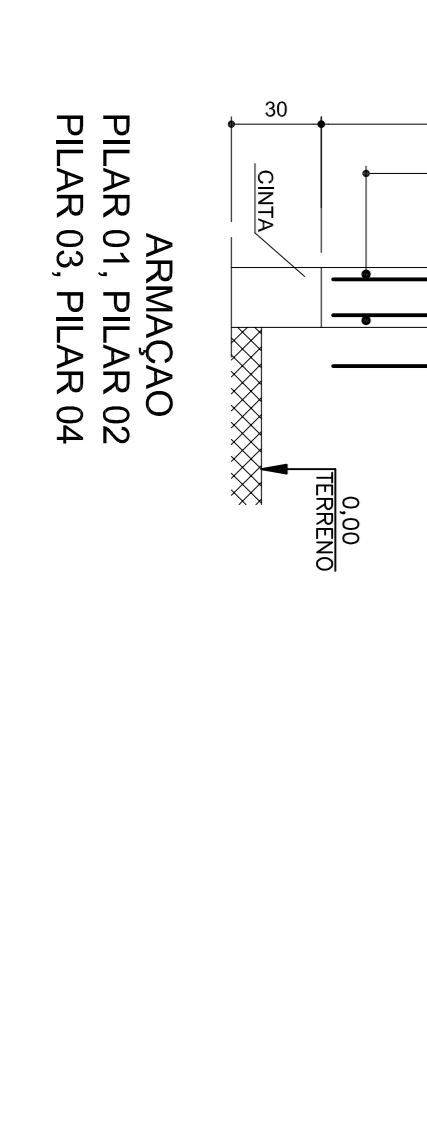
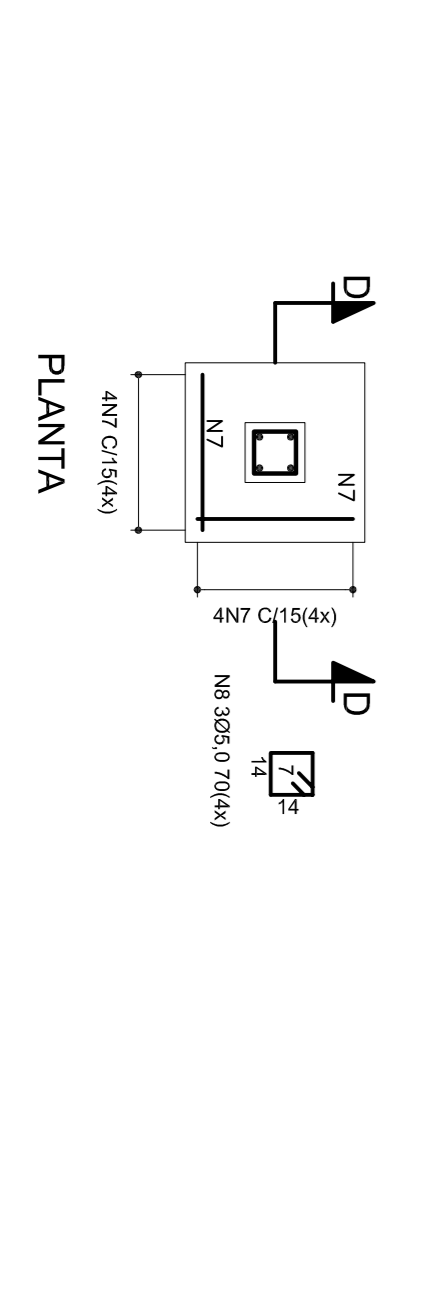
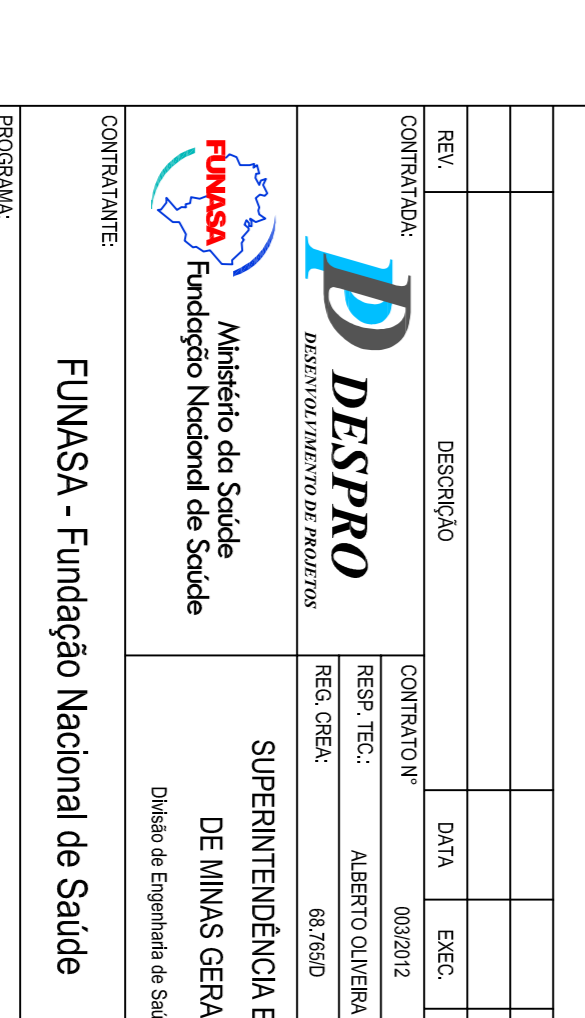
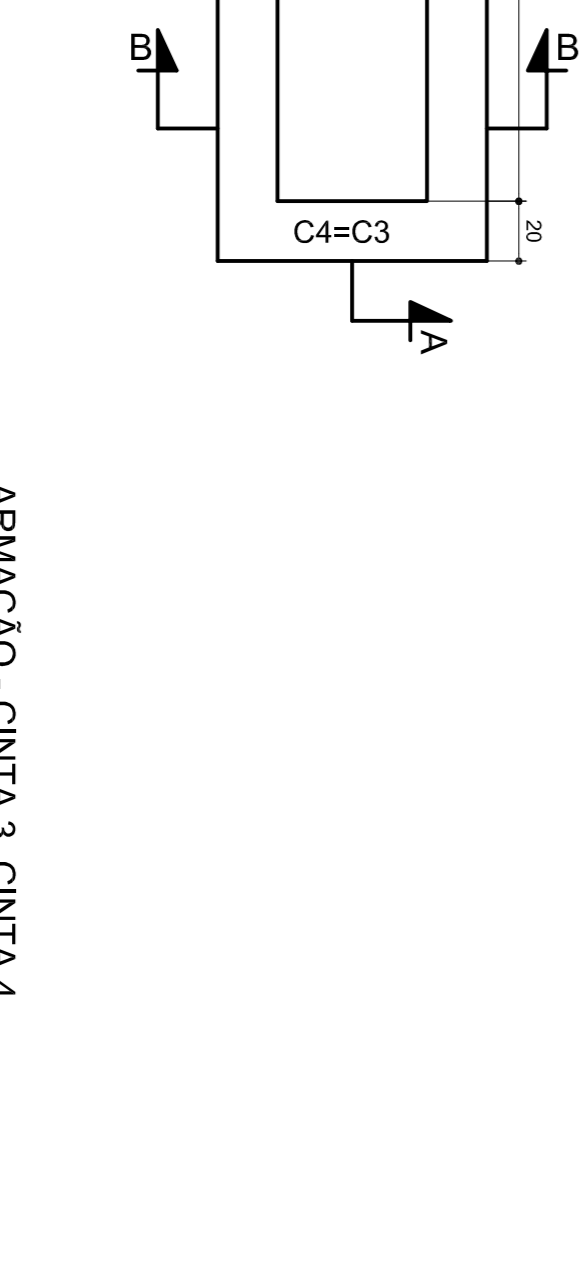
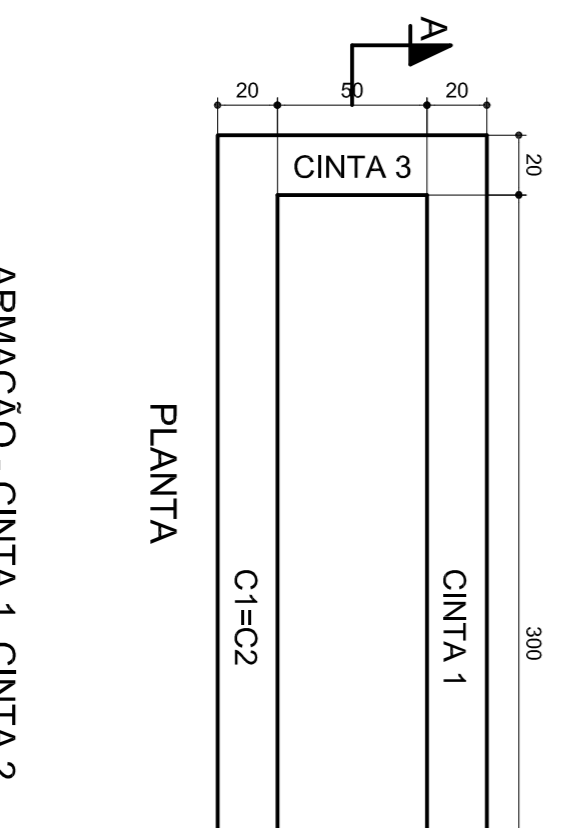
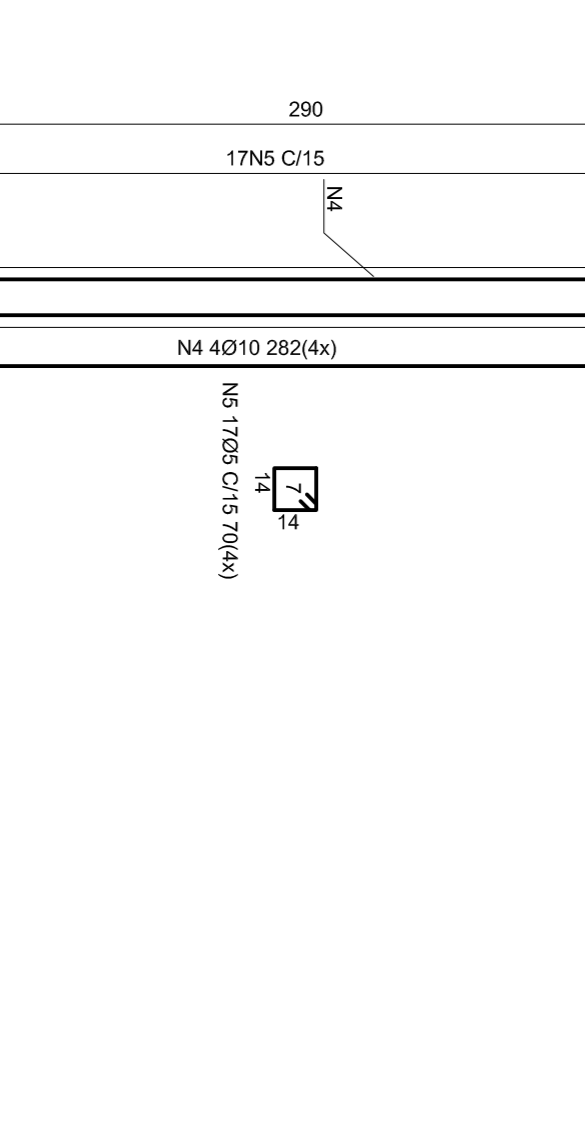
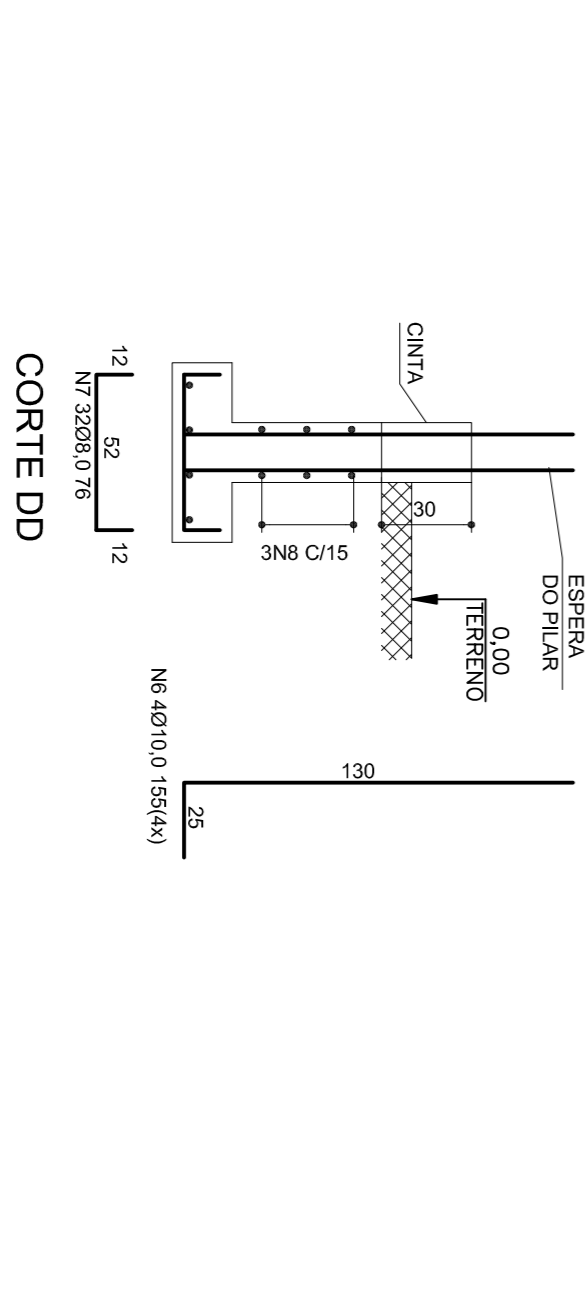
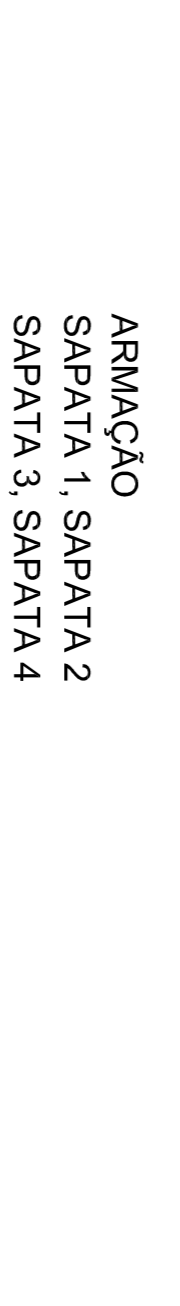
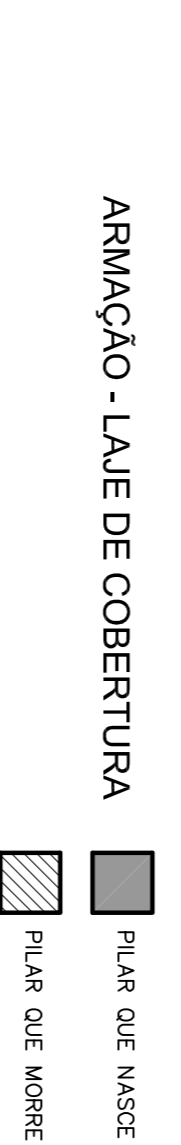
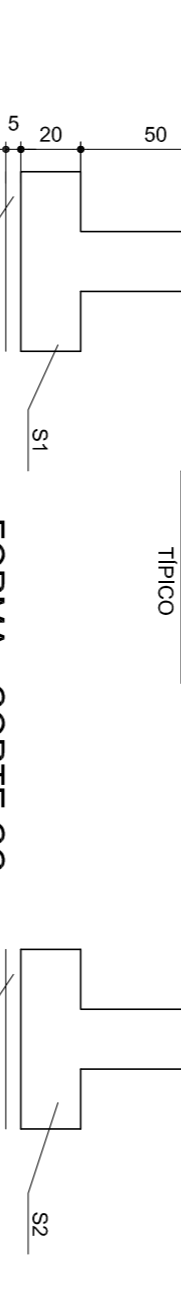
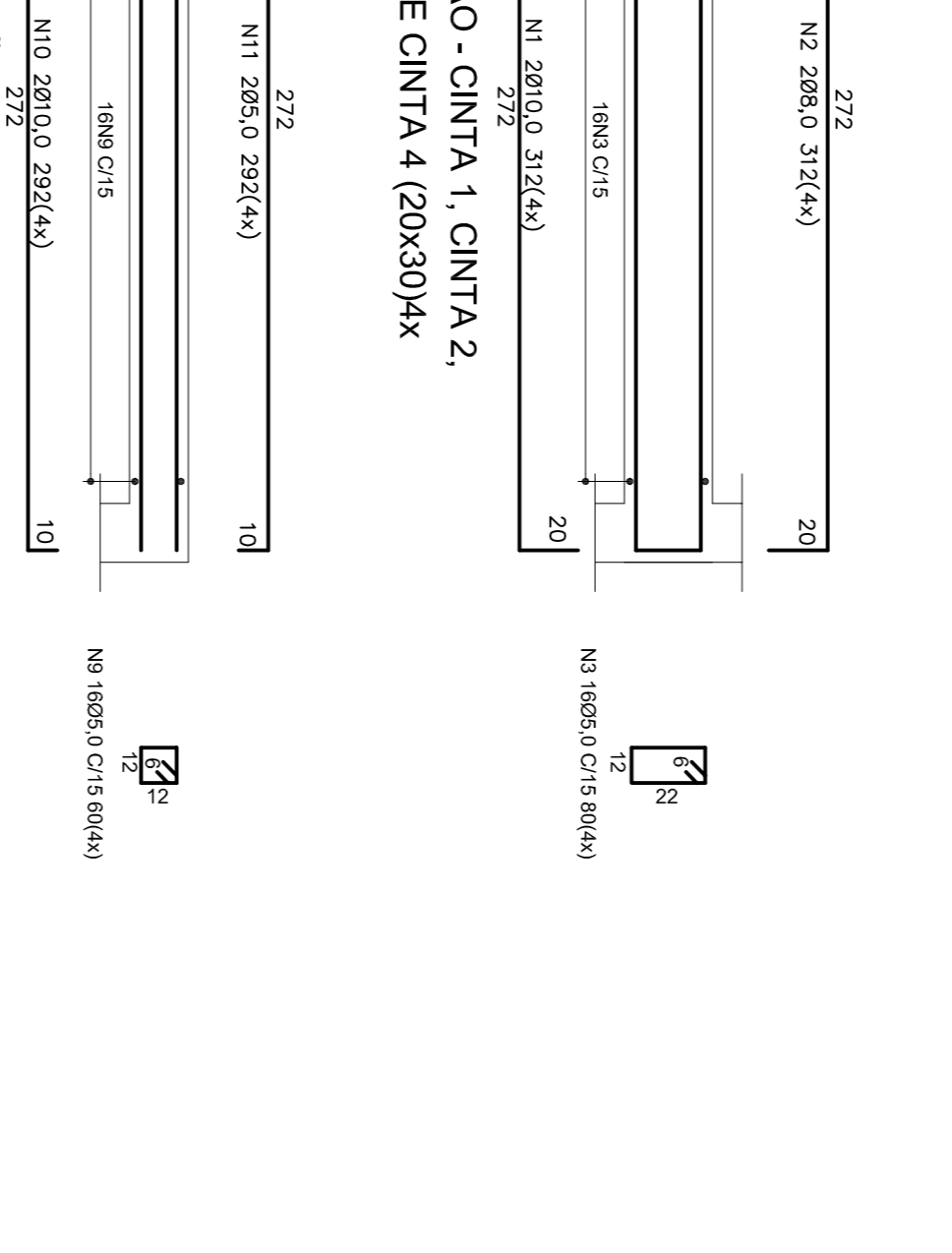
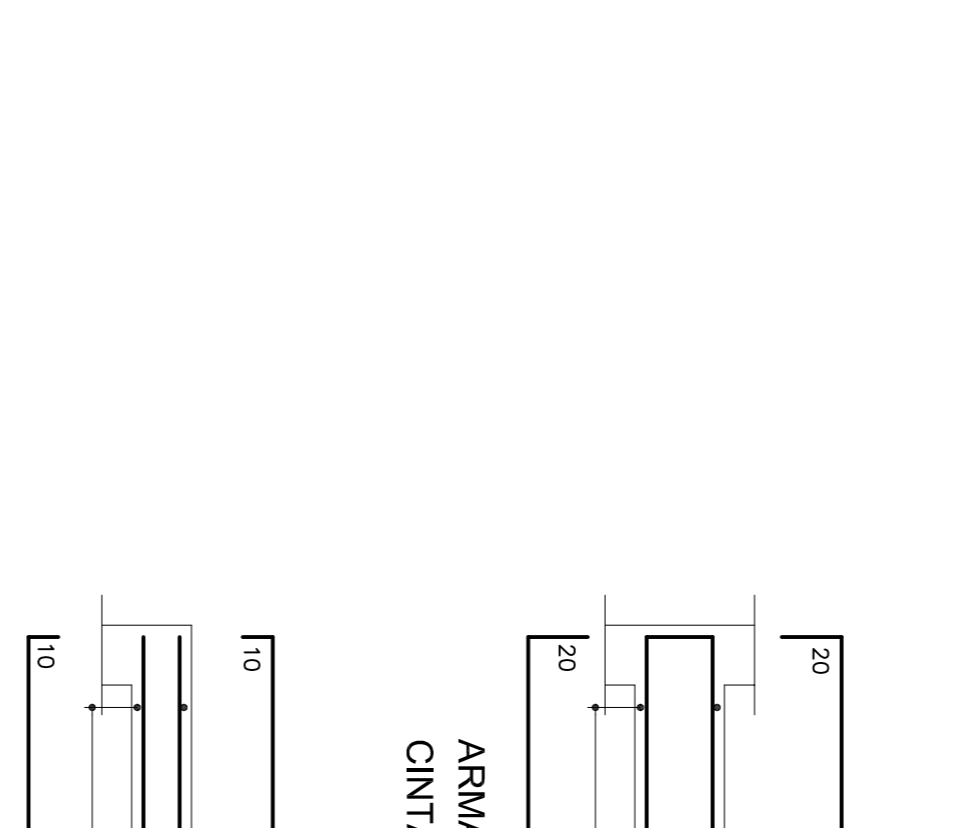


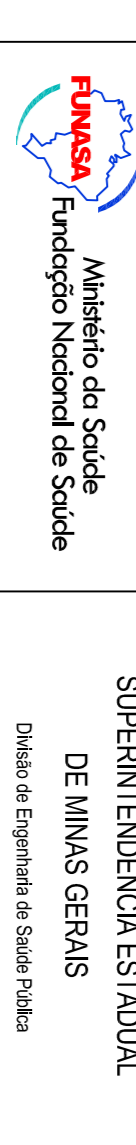
QUADRO DE AÇOS CA 50			
N	Ø (mm)	Q (kg)	COMPLEMENTOS TOTAL (kg)
N1	10,0	08	312
N2	8,0	08	312
N3	5,0	64	80
N4	10,0	16	282
N5	5,0	68	70
N6	10,0	16	155
N7	8,0	32	78
N8	5,0	12	70
N9	5,0	64	60
N10	10,0	08	292
N11	5,0	08	292
N12	10,0	08	372
N13	5,0	48	80
N14	10,0	08	122
N15	6,3	12	82
N16	6,3	06	162
N17	6,3	24	102
N18	6,3	08	352
N19	6,3	38	272
TOTAIS			210,65

QUADRO DE AÇOS CA 50			
Ø (mm)	COMPR (m)	PESO (kg)	PESO+10% (kg)
5,0	205,76	0,154	34,88
6,3	175,86	0,246	43,01
8,0	48,28	0,385	19,47
10,0	157,76	0,617	97,34
TOTAIS			191,69



NOTAS:
1 - COTAS EM cm, ELEVACOES EM m, SALVO INDICAO CONTRARIA.

REVISÃO	DESCRIÇÃO	DATA	EXEC.	VERIF.	APROV.
CONTRATANTE	FUNASA - Fundação Nacional de Saúde				
PROGRAMA	Programa de Aceleração do Crescimento - PAC 2				
MUNICÍPIO/UNIDADE	CORAÇÃO DE JESUS - MG				
TÍTULO	SISTEMA DE ABASTECIMENTO DE ÁGUA				
PROJETO ESTRUTURAL	CASA DE QUÍMICA - FORMA E ARMADAÇÃO				
DATA	OUTUBRO/2013	ESCALA	INDICADA		FRENCHA
ARQUIVO	DE-2012.007-MG-COUSA-EST-002=0				02



RESPOSTA TÉCNICA: ALBERTO OLIVEIRA CHAVES
REG. CREA: 68.785/0
SUPERINTENDÊNCIA ESTADUAL DE MINAS GERAIS
Divisão de Engenharia de Saúde Pública