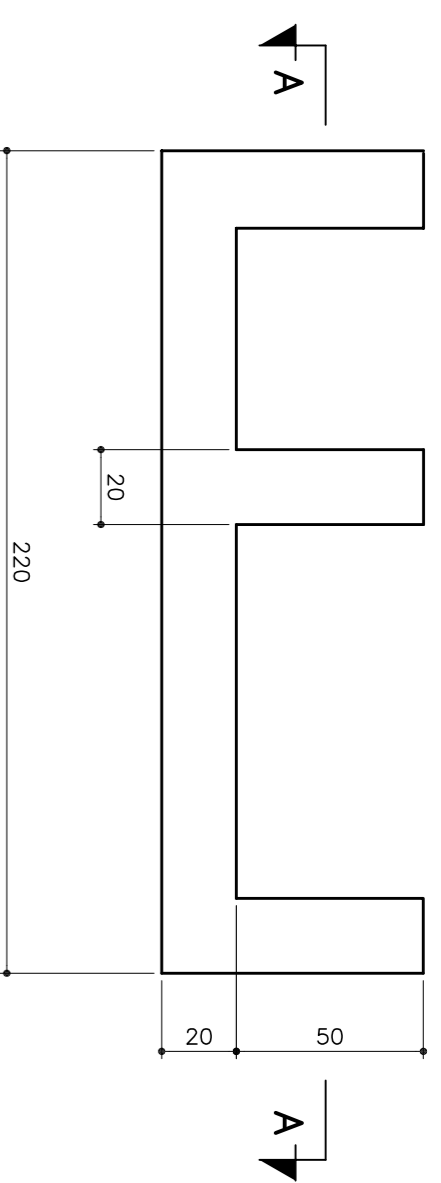


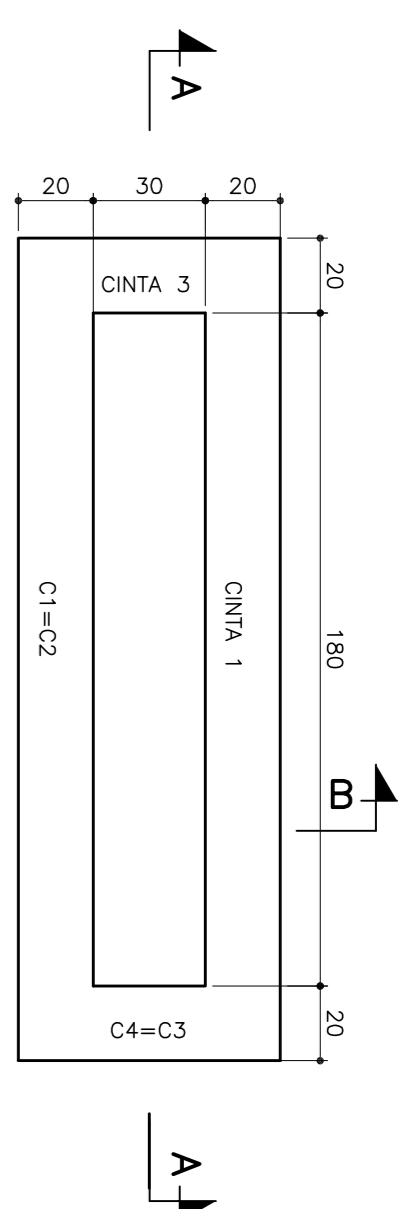
ABRIGO DOS QUADROS ELÉTRICOS

FORMA – CINTA 1, CINTA 2, CINTA3, CINTA 4

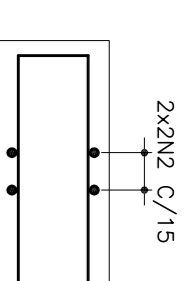


PLANTA
ESC.: 1:20

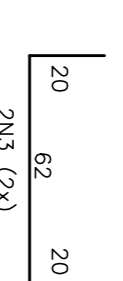
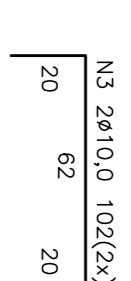
ARMAÇÃO – CINTA 3, CINTA 4



PLANTA
ESC.: 1:20

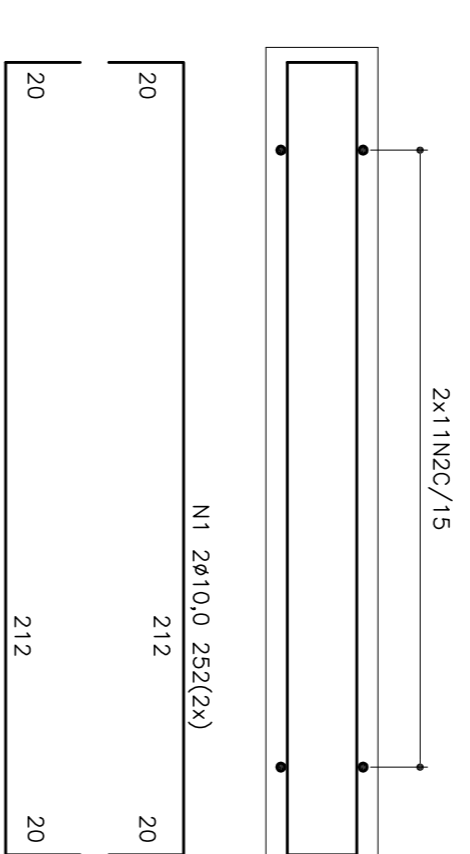


N2 52x25,0 C/15 30

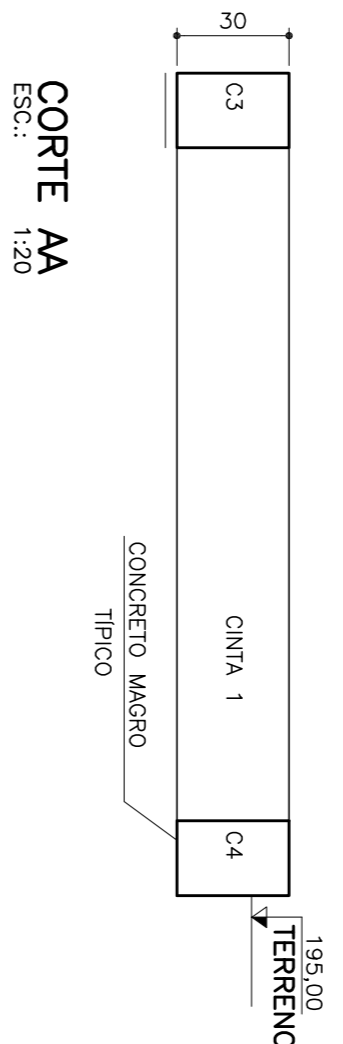


PLANTA
ESC.: 1:20

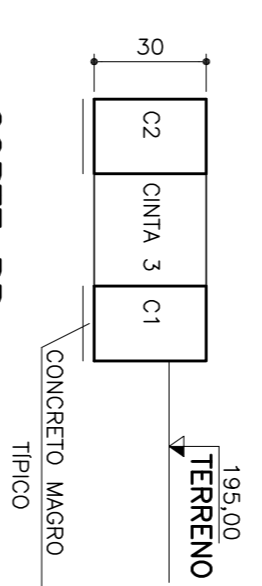
PLANTA ARMAÇÃO – CINTA 1, CINTA 2



PLANTA
ESC.: 1:20



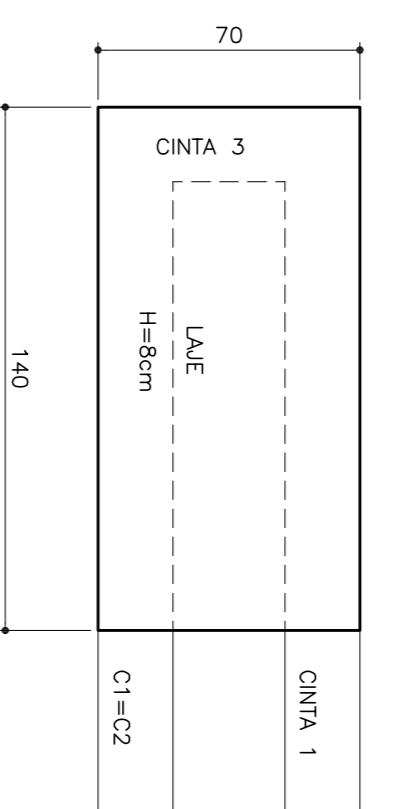
CORTE AA
ESC.: 1:20



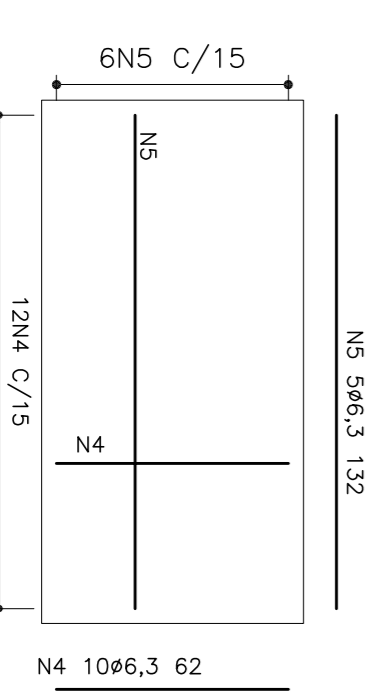
CORTE BB
ESC.: 1:20

N	Ø (mm)	Q	COMPRIMENTOS	
			UNIT (cm)	TOTAL(m)
N1	10,0	08	252	20,16
N2	5,0	52	21	10,92
N3	10,0	08	102	8,16
N4	6,3	10	62	6,20
N5	6,3	05	132	6,60
N6	6,3	16	82	13,12
N7	6,3	06	232	13,92
N8	6,3	15	62	9,30
N9	6,3	05	212	10,60
TOTAL	5,0	52	21	10,92
	6,3	57	782	59,74
	10,0	16	354	28,32
PESOS				
TOTAL	5,0	CA 60	10,92m	1,69kg
	6,3	CA 50	59,74m	14,64kg
	10,0	CA 50	28,32m	17,48kg

PLANTA LAJE 140x70x8
FORMA

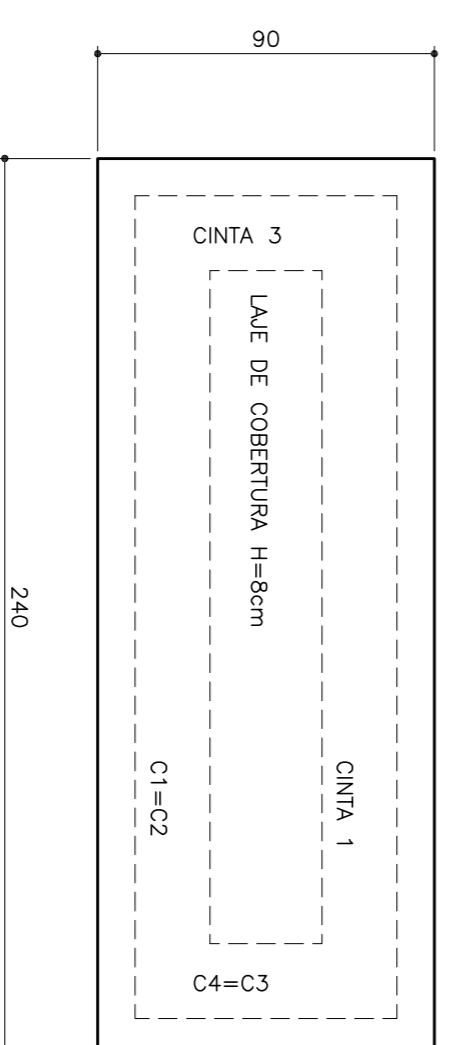


ARMAÇÃO

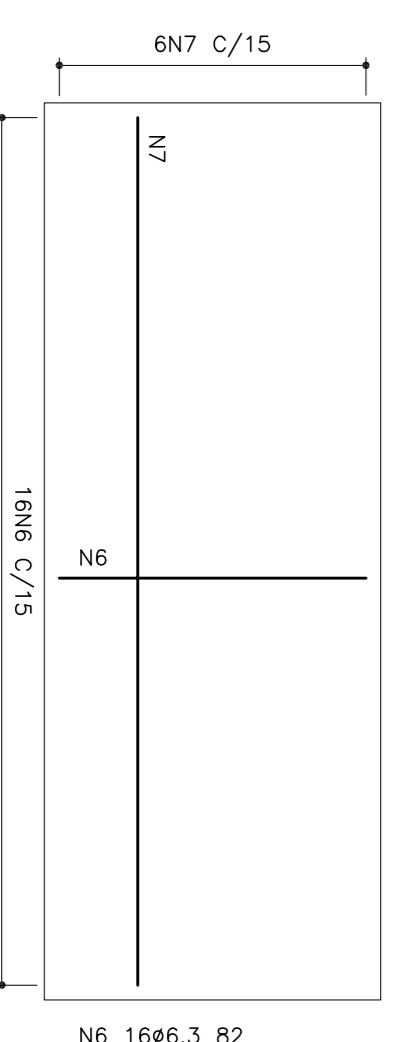


PLANTA
ESC.: 1:20

PLANTA LAJE DE COBERTURA 240x90x8cm
FORMA

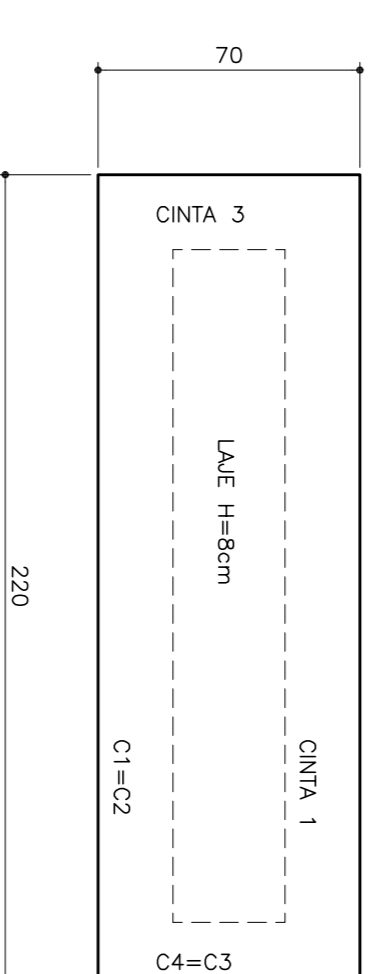


ARMAÇÃO

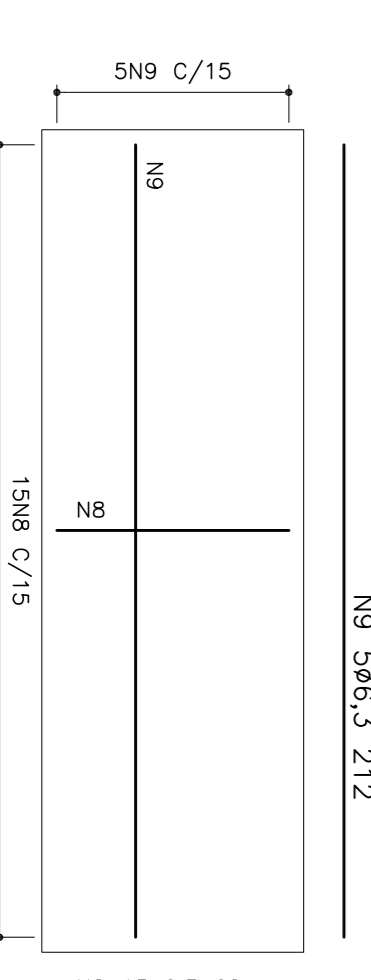


PLANTA
ESC.: 1:20

PLANTA LAJE 220x70x8cm
FORMA



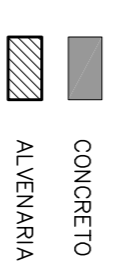
ARMAÇÃO



PLANTA
ESC.: 1:20

NOTAS:
1-CORTAS EM CENTIMETROS, ELEVAÇÕES EM METRO SALVO INDICAÇÃO CONTRÁRIA.

LEGENDA:



REV.	DESCRIÇÃO	DATA	DEC.	VERIF.	APROV.
CONTRATADA:	DESPRO	CONTRATO N°	0002012	RESP. TEC:	ALBERTO OLIVEIRA CHAVES
		RES. ORÇ:	89.7850	RES. ORÇ:	
Ministério da Saúde Fundação Nacional de Saúde			SUPERINTENDÊNCIA ESTADUAL DE MINAS GERAIS Divisão de Engenharia de Saúde Pública		
CONTRATANTE: FUNASA - Fundação Nacional de Saúde					
PROGRAMA: Programa de Aceleração do Crescimento - PAC 2					
MUNICÍPIO/ÁREA: CORAÇÃO DE JESUS - MG					
BREJINHO					
TÍTULO: SISTEMA DE ABASTECIMENTO DE ÁGUA					
PROJETO ESTRUTURAL					
ABRIGO OCM - FORMA E ARMAÇÃO					
DATA:	OUTUBRO/2013	ESCALA:	INDICADA	FRANQUIA:	03
ARQUIVO:	DE:2012.007.MG.COUSA-EST.003=0				